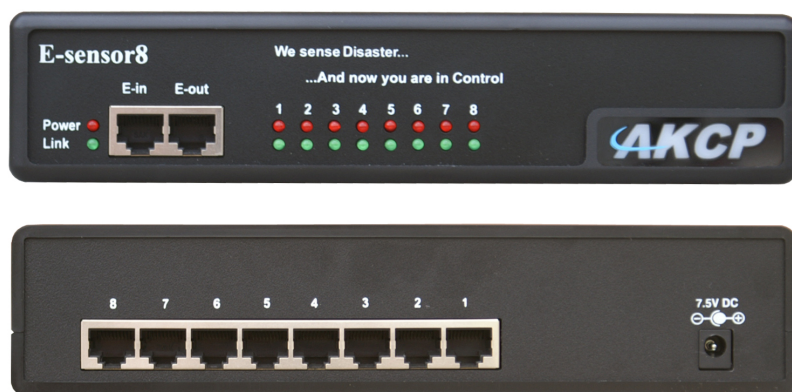


Sensor Control...
Access Control...

E-sensor8

SNMP-based Environmental and Security Monitoring Solution



Applications

Monitoring Solutions for:-

- Data Center & Server Rooms
- Telecommunication Room
- Network Equipment
- Remote ATM
- Backup Power & Generators
- Air Conditioning
- Cryogenics & Food industry
- Warehousing
- Medical & Pharmaceutical applications
- Server Rack Monitoring
- Building & Real estate Management
- Power Monitoring

Is your system designed to control the unpredictable?
Does maintaining your infrastructure keep you on edge?

With the AKCP E-sensor8 expansion module, together with your securityProbe 5E you can safeguard your infrastructure and enterprise resources from disaster before it happens.

Features

- Connect up to 8 sensors to the 8x RJ45 ports
- Compatible with all of AKCP's intelligent sensors
- Expands the securityProbe 5E's capabilities
- Rack Mountable 19" 1U
- Use with AKCP's DIN rail sensor rackmount system
- Extendable Using Standard CAT5 LAN Cable
- Daisy Chain unlimited number of expansion modules

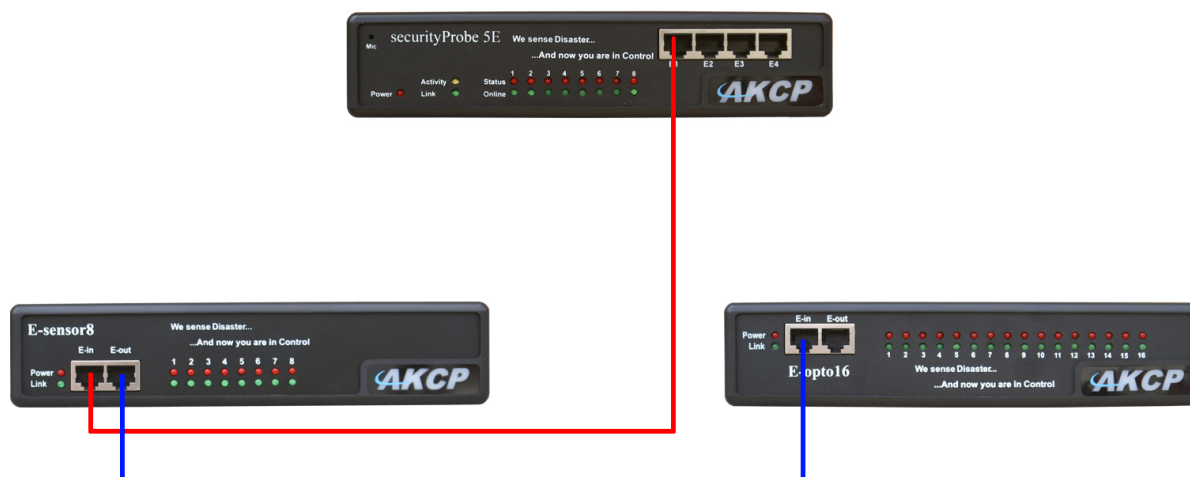
8 Intelligent sensor port expansion module for your securityProbe 5E

The E-sensor8 is an expansion module that has (8) RJ-45 intelligent sensor ports and is connected to any of the (4) RJ-45 expansion ports located on the front panel of the securityProbe 5E base units. They are connected using standard CAT5 LAN cable.

Any sensor within AKCP's complete line of intelligent sensors can be connected to the intelligent sensor ports which are located on the rear of the unit. 16 LED's on the front provide each sensors visual condition, 8x red for status and 8x green for online

The expansion modules can be daisy chained together using the units input, or E-in and output, E-out port. These also are RJ-45 ports and use standard CAT5 cable. These E-modules can be extended from the securityProbe 5Es base unit or from each other up to 300 meters, or roughly 1000 feet.

Daisy Chained Expansion Modules



Note: The 300 meter maximum run length is not the total run length of all of the E-modules combined. This is the Expansion modules maximum cable length from either the base unit or from each other. There is no limit to how many expansion modules can be connected in this 300 meter run to a single securityProbe 5E base unit. This solely depends on how many sensors are connected. Up to 600 sensors can be connected to a single securityProbe 5E.

The OID's for checking the expansion modules and securityProbe 5E are as follows:

The OID will start with .1.3.6.1.4.1.3854.2 for checking the sensors on the expansion modules including the E-sensor8.

This SNMPwalk command .1.3.6.1.4.1.3854.2.3.1.1 can be used for checking all of the sensors on the securityProbe 5E.

This SNMPwalk command .1.3.6.1.4.1.3854.2.2.1.1 can be used for returning the status of the expansion modules.

Industry Certifications & Network Management Systems

AKCP offers NMS integration for leading network management systems such as:

AdRem NetCrunch
Quest Software – Big Brother
Castle Rock
HP OpenView

IBM Tivoli
Loriot Pro
Logalot
MRTG

SiteScope
Somis WebNM and Denika
WhatsUp Gold
Computer Associates Unicenter TNG

Dimension

- Size : 8.5" x 5.43" x 1.80 "
- Weight : 2.4 pounds

Power Requirements

- Voltage 7.0 - 9 VDC, 3 Amp

Power Consumption

- Typical 6.150 Watt, 0.82A

Inputs

- 8x RJ-45 ports for connecting AKCP sensors
- 1x RJ-45 expansion module input (E-in)

E-modules

- Daisy chain multiple E-modules including E-sensor8 and E-opto16 combined
- Uses standard RJ-45 connections and CAT5 LAN cable
- Data transfer rate: 115.2 KBPS
- Maximum extension cable run length: 300 meters (1000 feet)
- 1 RJ-45 expansion module input (E-in)
- 1 RJ-45 expansion module output (E-out)
- Compatible with AKCPs complete line of intelligent sensors
- Connect up to 600 AKCP intelligent sensors to one securityProbe 5E

Status Indication

- LED indication for Power
- LED for Network Connectivity
- LED for sensor online and threshold status
- Disconnect alert from securityProbe 5E base unit notifications.

Operating Environment

- Temperature : Min. -35° C Max. +55° C
- Humidity : Min. 20% - Max. 80% (Non-Condensing)

MTBF

- 400,000 Hours

Mounting

- Rack mount brackets included
- Compatible with AKCP DIN and tray rackmount kits

Output

- Configurable output signals (0VDC/5VDC) on any of the 8 RJ-45 sensor ports
- 1 RJ-45 expansion module output (E-out)

Power Consumption

- Typical 6.150 Watt, 0.82A

- One year limited warranty, Optional 2 year warranty.
- Unlimited lifetime support. Including all firmware updates