

WAC-2012 Series Media Converter



Features

- **Link Alarm**
Support link alarm function to help network administrators rapidly manage and recover from network faults
- **Power redundancy over DC input by DC jack and terminal block**
Support power redundancy over DC input to keep the healthy network connection without power outage risk for general industrial applications
- **9K byte Jumbo frame**
Support jumbo frame size 9K bytes to ease the network traffic loading and facilitate IPTV service
- **DIN RAIL/Wall mounting installation type**
Support both DIN RAIL and wall mounting type to facilitate the installation flexibility for general industrial applications
- **Operating temperature -20°C ~ 60°C**
Support extended operating temperature to guarantee the reliability and stability under the critical environmental condition with affordable cost

Target Applications

- Point-to-point fiber connection for long distance which requires reliable and stable link under critical environmental condition of general industrial application.

Fast Ethernet 10/100Base-TX to 100Base-FX
Media Converter with extended operating
temperature

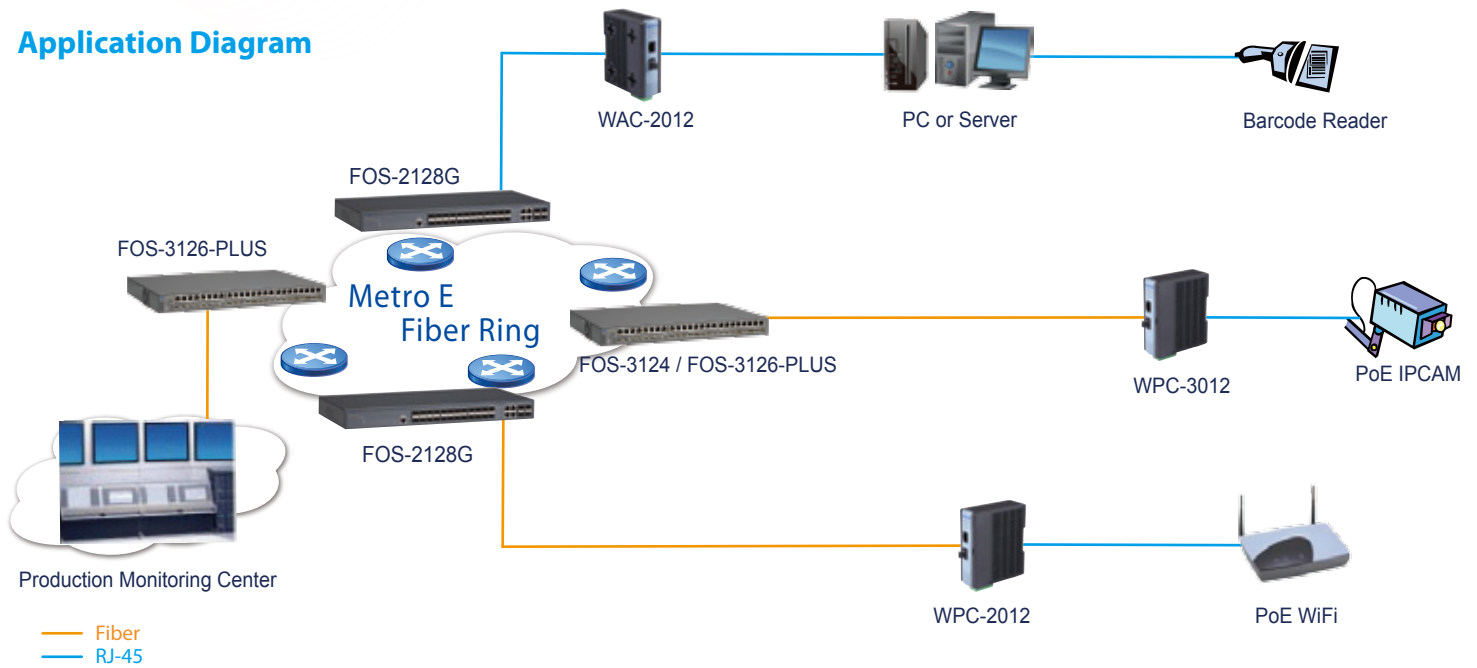
Description

Connection Technology Systems (CTS) WAC-2012 series media converters are the Fast Ethernet 10/100Base-TX to 100Base-FX media converter. The WAC-2012 series media converter converts traditional twisted-pair RJ45 cable into various fiber media including multi-mode, single-mode, SC connector, bi-directional WDM, or a SFP slot for pluggable fiber transceiver. The traditional transmission distance of 100m over RJ45 copper can be extended from 2km to 120km over fiber.

WAC-2012 series media converters adopt the brand new ID appearance as well as the well considered designs for the demand of different customer segments. The flexible power options have either DC power or AC/DC power adaptor to fulfill most of practical deployment scenarios. The extended operating temperature of WAC-2012 is from -20°C to 60°C which enables user to install the equipment under critical environment without reliability and stability concerns. It is especially designed for network operators, metro Ethernet providers, enterprise, SMB customer segment, who have the need of implementing fiber optical Ethernet networks over long distance for FTTx solutions with the demand of wide operating temperature, and are looking for an effortless and robust 1000Mbps media converter.

WAC-2012 series media converters are fully compliant with IEEE 802.3, 802.3u standards. Besides, it is equipped with some switching features including flow control and store and forward. Additionally, Link Alarm feature enables administrators to monitor the fiber link status in visual and intuitive mechanism.

Application Diagram



Specification

Interface

TP Port
Shielded 10/100Base-TX RJ45 x 1
F/O Port
100Base-FX x 1

Standards

IEEE 802.3 10Base-T
IEEE 802.3u 100Base-TX
IEEE 802.3x Flow Control

H/W Specification

Auto-Negotiation in TX port
MDI/MDIX Auto-Crossover supported
Support Link Alarm
1K MAC Address Table
48KBytes Memory Buffer

LED

Power, FDX, Status, Speed,
F/O Link/Act, TX Link/Act

Ethernet Features

Support 9K Bytes jumbo frame
Support Flow Control
Store and Forward Switching Mechanism

Other Features

DIP Switch configuration

Installation Type

Wall Mounting
DIN Rail Mounting

Power Requirement

DC Input
Input Voltage: 12 to 48VDC
(terminal block)

AC/DC Power Adaptor

- AC input: 100VAC~240VAC
- Frequency range: 50~60Hz
- DC output: 12V, 1A
Power Consumption: 4.6W Max

Environmental Condition

Operation: -20° ~ 60°C
Storage Temperature: -20° ~ 70°C
Humidity: 5% ~ 90%, non-condensing

Dimension & Weight

Size: 105x93x35 mm (WxDxH)
Shipping Weight: 0.42Kg

EMC/Safety

FCC Part 15 Class A, CE
* For further reports, please contact us for update

Order Information

MODEL	FIBER PORT					TP PORT		Power Accessory Type
	Speed	Fiber Type	Connector	Distance	Ports	Speed	Ports	
WAC-2012BTFC	100	MM	SC	2KM	1	10/100	1	-
WAC-2012BTFT	100	MM	ST	2KM	1	10/100	1	-
WAC-2012BTFC(SM-30/50/60/80/100)	100	SM	SC	30/50/60/80/100KM	1	10/100	1	-
WAC-2012W2A(SM-20/40)	100	WDM	SC	20/40KM	1	10/100	1	-
WAC-2012W2B(SM-20/40)	100	WDM	SC	20/40KM	1	10/100	1	-
WAC-2012SFP	100	SFP	-	-	1	10/100	1	AC/DC Power Adaptor
WAC-2012BTFC-AC	1000	MM	SC	550M	1	10/100/1000	1	AC/DC Power Adaptor
WAC-2012BTFC(SM-10/20/30/50/80)-AC	1000	SM	SC	10/20/30/50/80KM	1	10/100/1000	1	AC/DC Power Adaptor
WAC-2012W2A(SM-10/20/40)-AC	1000	WDM	SC	10/20/40KM	1	10/100/1000	1	AC/DC Power Adaptor
WAC-2012W2B(SM-10/20/40)-AC	1000	WDM	SC	10/20/40KM	1	10/100/1000	1	AC/DC Power Adaptor
WAC-2012SFP-AC	1000	SFP	-	-	1	10/100/1000	1	AC/DC Power Adaptor