

WPS-3005 Series Lite Industrial Ethernet Switch



Features

- **Power Redundancy over DC Input by DC Jack and Terminal Blocks**
Support power redundancy over DC input to keep the healthy network connection without power outage risk.
- **9K Bytes Jumbo Frame Size**
Support jumbo frame size 9K bytes to ease the network traffic loading and facilitate IPTV service.
- **DIN-Rail/Wall Mounting Installation Type**
Support both DIN-Rail and wall mounting types to facilitate installation flexibility for general industrial applications.
- **Operating Temperature -20°C ~ 60°C**
Support extended operating temperature to guarantee the reliability and stability in the critical environmental conditions.
- **IEEE 802.3at/af PoE/PSE**
Support IEEE 802.3at/af PoE feature to feed power to remote device and facilitate the deployment in the power unreachable application.

Target Applications

- **Point-to-point fiber connection for long distance which requires reliable and stable link under critical environmental condition of general industrial application.**

4 Ports 10/100/1000Base-T and 1 Port 1000Base-X Gigabit Ethernet Switch with Built-in IEEE 802.3at/af PoE/PSE Feature and Extended Operating Temperature

Description

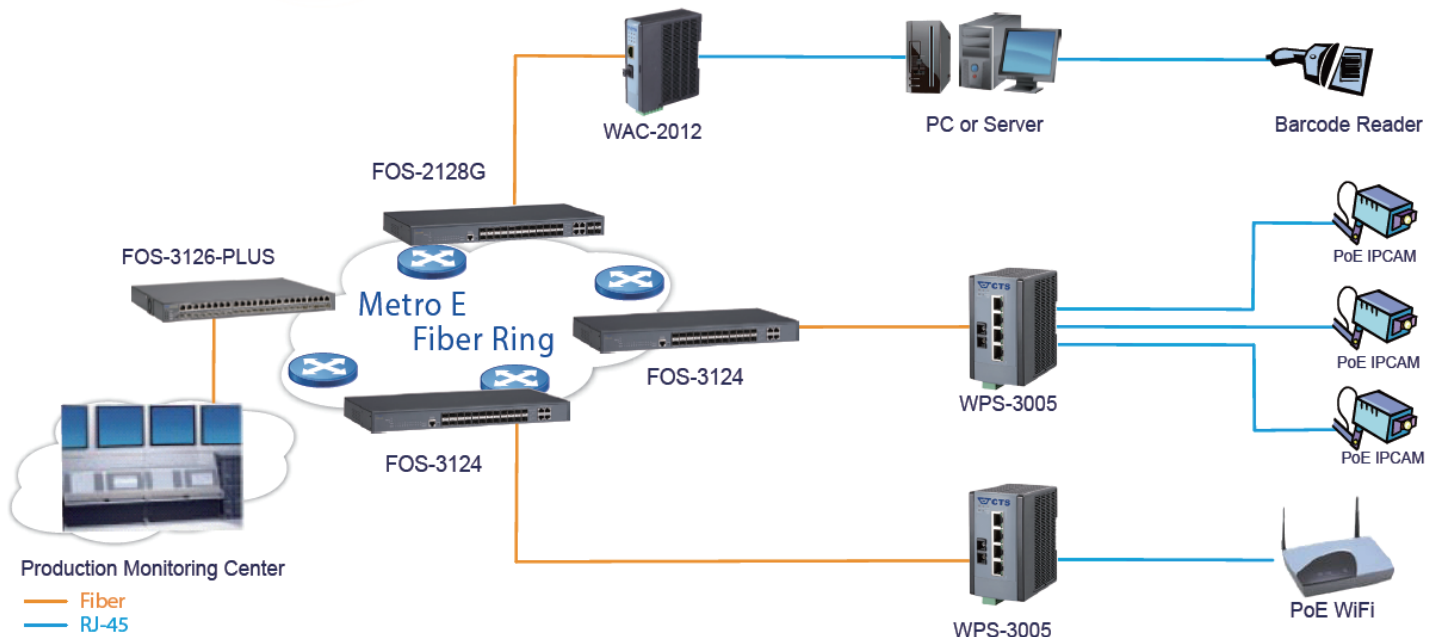
Connection Technology Systems (CTS) WPS-3005 series are 4 ports Gigabit Ethernet 10/100/1000Base-T with 1000Base-X Ethernet switches. The WPS-3005 series Ethernet switch converts traditional twisted-pair RJ45 cable into various fiber media including multi-mode, single-mode, SC connector, bi-directional WDM, or a SFP slot for pluggable fiber transceivers. The traditional transmission distance of 100m over RJ45 copper can be extended from 550m to 80km over fiber.

WPS-3005 series Ethernet switch adopts the brand new ID appearance as well as the well considered designs for the demand of different customer segments. The flexible power options have either DC power or AC/DC power adaptor to fulfill most of practical deployment scenarios. The extended operating temperature of WPS-3005 Ethernet switch is from -20°C to 60°C which enables users to install the equipment under critical environment without reliable and stable concerns. It is especially designed for network operators, metro Ethernet providers, enterprise, SMB customer segment, who have the need of implementing fiber optical Ethernet networks over long distance for point-to-point fiber connection with the demand of wide operating temperature, and are looking for an effortless and robust gigabit switch.

WPS-3005 series Ethernet switch is fully compliant with IEEE 802.3, 802.3u, 802.3ab & 802.3z standards. Besides, the user can connect another switch or NIC through the 10/100/1000Base-T twisted-pair RJ-45 port of WPS-3005 series Ethernet switch without crossover cables needed and monitor the status through comprehensive LED display.

WPS-3005 series Ethernet switch has built in PoE/PSE feature which complies to IEEE802.3at/af standard. With PoE/PSE enabled feature, WPS-3005 can significantly solve the installation obstacle for the user in the power unreachable situation. It can actively feed power to the remote equipment which cannot have the power source available and simply facilitate the user applications to be deployed smoothly.

Application Diagram



Specification

Interface

TP Port
Shielded 10/100/1000Base-T PoE RJ45 x 4
F/O Port
1000Base-X x 1

Standards

IEEE 802.3 10Base-T
IEEE 802.3u 100Base-TX
IEEE 802.3ab 1000Base-T
IEEE 802.3z 1000Base-X
IEEE 802.3x Flow Control
IEEE 802.3af Power over Ethernet
IEEE 802.3at Power over Ethernet Enhancements

H/W Specification

Auto-Negotiation in TX ports
MDI/MDIX Auto-Crossover Supported
Support Full/Half Duplex Mode Operation
2K MAC Address Table
128K Bytes Memory Buffer
10Gbps Non-Blocking Switching Fabric

LED

PWR, PW T1, PW T2, F/O,Link/ACT,
PWR/Port Status,
Link/ACT/Speed, PoE

Ethernet Features

Support 9K Bytes Jumbo Frames
Support Flow Control
Store and Forward Switching Mechanism

Installation Type

Wall Mounting
DIN Rail Mounting

Power Requirement

DC Input
DC Power Jack x 1
Terminal Block x 2
Input Voltage: 48VDC

Power Consumption:

4.2W (Max. without PoE Operation)
130W (Max. with PoE+ Full Loading)

Environmental Condition

Operation: -20° ~ 60°C
Storage Temperature: -20° ~ 70°C
Humidity: 5% ~ 90%, non-condensing

Dimension & Weight

Size: 61x93x105 mm (WxDxH)
Weight: 0.45kg

EMC/Safety

FCC Part 15 Class A, CE

Order Information

WPS-3005

MODEL	FIBER PORT					TP PORT	
	Speed	Fiber Type	Connector	Distance	Ports	Speed	Ports
WPS-3005FC	1000Mbps	MM	SC	550M	1	10/100/1000Mbps	4
WPS-3005FC(SM-10/20/30/50/80)	1000Mbps	SM	SC	10/20/30/50/80KM	1	10/100/1000Mbps	4
WPS-3005W2A(SM-10/20/40)	1000Mbps	WDM	SC	10/20/40KM	1	10/100/1000Mbps	4
WPS-3005W2B(SM-10/20/40)	1000Mbps	WDM	SC	10/20/40KM	1	10/100/1000Mbps	4
WPS-3005SFP	1000Mbps	SFP	-	-	1	10/100/1000Mbps	4

Power Supply

WAP-POWER-48D240/SDR-240-48	48V/240W DIN-Rail Power Supply	Working Temperature : -25°C ~60°C , 240W 60°C ~70°C , output derating 2.5% per degree (180W at 70°C)
-----------------------------	--------------------------------	---

SFP-30

MODEL	COPPER PORT					Temperature
	Speed	Type	Connector	Distance		
SFP-30TP	1000Mbps	-	RJ-45	100M		0°C to 70°C

SFP-31

MODEL	FIBER PORT					
	Speed	Type	Connector	Distance	Wavelength	Temperature
SFP-31FC	1000Mbps	MM	LC	550M	850nm	0°C to 70°C
SFP-31FC(SM-10/20/40/50/80/100/120)	1000Mbps	SM	LC	10/20/40/50/80/100/120KM	1310nm/1310nm/1310nm/1550nm/1550nm 1550nm/1550nm	0°C to 70°C
SFP-31W2A(SM-10/20/40/80)	1000Mbps	WDM	LC	10/20/40/80KM	TX:1310nm/1310nm/1310nm/1510nm RX:1550nm/1550nm/1550nm/1570nm	0°C to 70°C
SFP-31W2B(SM-10/20/40/80)	1000Mbps	WDM	LC	10/20/40/80KM	TX:1550nm/1550nm/1550nm/1570nm RX:1310nm/1310nm/1310nm/1510nm	0°C to 70°C
SFP-31FC-C11	1000Mbps	CWDM	LC	80KM	1470nm	0°C to 70°C
SFP-31FC-C12	1000Mbps	CWDM	LC	80KM	1490nm	0°C to 70°C
SFP-31FC-C13	1000Mbps	CWDM	LC	80KM	1510nm	0°C to 70°C
SFP-31FC-C14	1000Mbps	CWDM	LC	80KM	1530nm	0°C to 70°C
SFP-31FC-C15	1000Mbps	CWDM	LC	80KM	1550nm	0°C to 70°C
SFP-31FC-C16	1000Mbps	CWDM	LC	80KM	1570nm	0°C to 70°C
SFP-31FC-C17	1000Mbps	CWDM	LC	80KM	1590nm	0°C to 70°C
SFP-31FC-C18	1000Mbps	CWDM	LC	80KM	1610nm	0°C to 70°C